

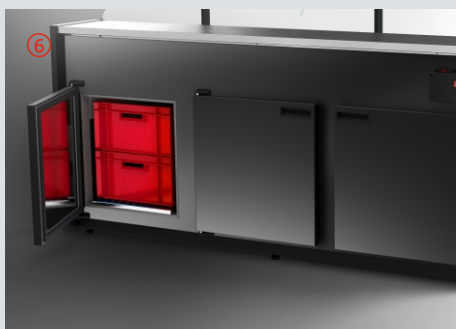
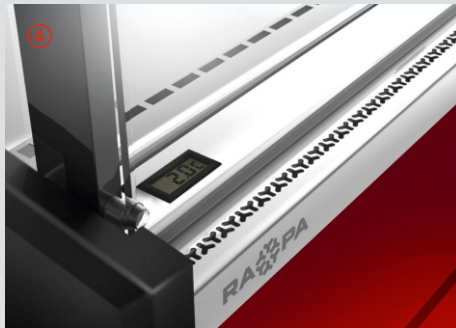
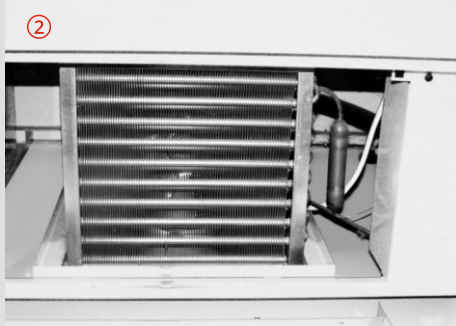
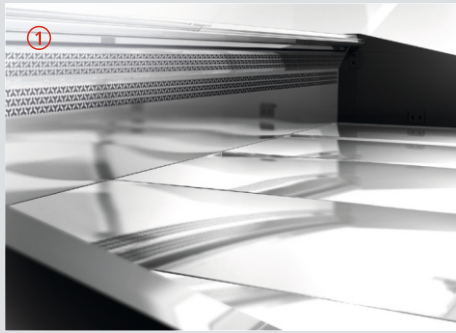
REFRIGERATED COUNTERS WITH CURVED GLASS PANE



www.rapa.pl/en

RAPA sp. j.
9 Ceramiczna Street
20-149 Lublin, Poland

+48 81 718 46 51
rapa@rapa.lublin.pl



STANDARD EQUIPMENT

Refrigerating unit

- 3rd climatic class
- Plug-in unit powered with ecological R-290 refrigerant ①
- Fan assisted cooling – models: S, Si
- Gravitational cooling – models: E, E Max, E1, E1 Max, D, D3, C, B, B1, B2, B3
- Electronic temperature controller with display,
- Access to a condenser that does not require tools ②
- Independent glass panes drainage system – S, Si model
- Condensate drain into the container – models: E, E Max, E1, E1 Max, D, D3, C, B, B1, B2, B3
- Automatic condensate evaporation system – modele: S, Si

Exposition

- Internal top made of stainless steel equipped with soft bumpers – models: E, E Max, D, D3, C, B, B1, B2, B3
- Internal top made of painted stainless steel – S model
- External top made of "linen" stainless steel – E1, E1 Max model
- Divided bottom of the exposition made of "mirror" stainless steel ③
- Electronic thermometer on the customer side ④
- LED lighting adapted for goods
- Glass panes opening system on the lift-up gas springs – S model
- Front glass pane divided, curved, opened up – S model
- Front glass pane curved, short – Si model
- Front glass pane divided, curved, tilted – E, E Max, E1, E1 Max, D, D3, C, B, B1, B2, B3 model ⑤
- All panes made of tempered glass
- Night covers

Storage

- Non-threshold storage bottom made of stainless steel
- Door of storage in the same colour as housing with magnetic gasket
- Uncooled space under the storage, next to the aggregate – E, E1, D, D3, B, B1, B2, B3 model
- Perforated platforms for EURO 2 containers – E Max, E1 Max model
- Perforated platform on whole surface of storage bottom regulating air circulation – S, Si model
- Storage allows to store:
 - S, Si model – from 4 pcs. up to 8 pcs. of Euro 2 containers ⑥
 - E Max, E1 Max model – 6 pcs. of Euro 2 containers

ADDITIONAL EQUIPMENT

- Worktop made of: granite, "linen" stainless steel, grinded stainless steel, laminated board
- Set of 4 pcs. of rotary wheels (2 with brake)*
- Housing made of stainless steel
- Painting of housing in RAL colour from the RAPA colour chart
- Painting of housing in individual of RAL colour
- Legs masking
- Sloping bottom of the exposition area
- Front shelf for customer - railing
- Shelf under the storage, next to aggregate (non-refrigerated)
- Shelf in the exposition area made of tempered glass (non-refrigerated)
- Exposure partition made of tempered glass - permanently fixed
- Storage partition permanently fixed
- Automatic condensate evaporation system
- Glass panes drainage system
- Set of 2 sides with side glass panes - required in series lines
- Device without aggregate
- Front made of furniture board - contact the Customer Service

* not applicable to modules joined in series lines

Housing

- Sides made of ABS in inoXframe design – S, Si model
- Decorative sides made of HIPS in the colour from the RAPA colour chart, filled with ecological polyurethane foam – E, E Max, E1, E1 Max model
- Plain sides made of silver-metallic HIPS, filled with ecological polyurethane foam – D3, B3 model
- Sides made of HIPS in the colour of front finish – D, B1, B2 model
- Sides made of grey laminated board – C, B model
- Coloured finish of the device front – D, D3, C, B, B1, B2, B3 model
- Housing painted in RAL 9005 Jet black colour semi mat – S, Si model
- Housing painted in one of the colours chosen from the RAPA colour chart – E, E Max, E1, E1 Max, D3, B2, B3 model
- Housing painted in RAL 7004 Signal grey colour from the RAPA colour chart – D model
- Housing painted in RAL 9003 Signal white colour – C, B, B1 model
- Legs masking in the colour of housing – E, E Max, E1, E1 Max, B2 model
- Legs masking in RAL 7004 Signal grey colour – D, D3, B3 model
- Possibility to connect in longer series lines – S, Si, E, E Max, E1, E1 Max model
- Adjustable legs
- Front panels made of powder-painted steel or furniture board – S, Si model
- Backlighting, coloured bottom plafond of the device, HIPS colours to be chosen from the RAPA colour chart – D, D3, C model
- Housing backlight with energy-saving, coloured LED diodes – E, E Max, E1, E1 Max, B2, B3 model
- Double electric socket from the service side on the right side of the device
- Front finish with silver-metallic bumpers of soft PVC – E, E Max, E1, E1 Max model
- Front finish with grey bumpers of soft PVC – D, D3, C, B, B1, B2, B3 model
- Front finish in 2 versions:
 - with bumpers
 - without bumpers
- X, Xi model

Worktop

- Worktop made of grey laminated board – model C, B
- Worktop made of grinded stainless steel – model S, Si, E, E Max, D, D3, B1, B2, B3
- Worktop made of "linen" stainless steel – model E1, E1 Max

- Support for glass shelf in exposition area of series lines
- Evaporator protected with a preservative coating
- Order and moutage of double electric socket
- Order counter without double electric socket
- Change the side of double electric socket moutage - left side of the device

ACCESSORIES

- Cutting board
- Pollen filter
- Cascade made of stainless steel "mirror" pattern
- Platform on worktop for cashbox or scale made of grinded stainless steel
- Platform for top containers in storage
- Front shelf for customer - railing
- Exposure partition made of transparent PET or PMMA - movable
- Exposure partition made of tempered glass - movable
- USB temperature recorder

REFRIGERATED COUNTERS WITH CURVED GLASS PANE

COLOUR



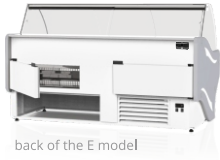
S model



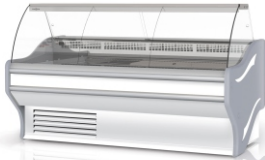
Si model



E, E Max model



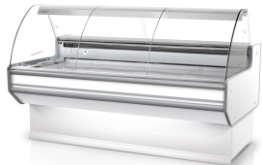
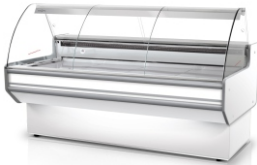
E1, E1 Max model



B model



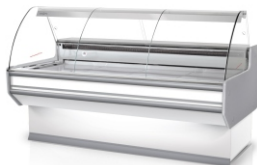
B1 model



B2 model



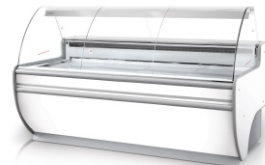
B3 model



C model



D model



D3 model

front	
housing	
sides	

housing	
legs masking	
sides	

front	
housing	
sides B	
sides B1	

housing and legs masking B2	
housing B3	
front B2, B3	
sides B2	
sides and legs masking B3	

housing C	
housing D	
front and plafond	
sides C	
sides D	
legs masking D	

housing	
front and plafond	
sides and legs masking	

