



MANUFACTURER OF REFRIGERATION EQUIPMENT

# Refrigerated counters and heated serve over counters

WITH STRAIGHT PANE / WITH CURVED PANE



[rapa.pl/en](http://rapa.pl/en)



RAPA sp. j. • Ceramiczna 9, 20-149 Lublin, Poland  
+48 790 444 619 • +48 790 444 63 • [rapa@rapa.lublin.pl](mailto:rapa@rapa.lublin.pl)

Whether you need to display meat, cold cuts, cheese, fish or delicatessen products in a refrigerated display counter, RAPA can offer you the the most suitable solution.

In our wide range of devices, you will easily find the ideal model for your shop and your product range - you can choose between different shapes, sizes and many different finishes and equipment options.

## Heated serve over counters

The heated serve over counters will work well in shops at hot food stands, as well as in restaurant buffets or school canteens. Devices only have an open, uncooled storage space.

### SiX Line - DHBM

LINE OF COUNTERS EQUIPPED WITH 3 PCS. PROVIDERS ADAPTED TO ACCOMMODATE CONTAINERS.



**L-X/DHBM**  
cm - l. 134,5 / d. 120 / h. 121

**L-X/DHBM**  
cm - l. 134,5 / d. 120 / h. 121

## Refrigerated counters

Save energy with inverter technology!

Devices equipped with an inverter engine are characterized even by: 50% lower electricity consumption and quiet operation of the compressor.



### GT Line

LINE OF REFRIGERATED COUNTERS WITH CONDENSATE DRAIN TO SEWER WITH INVERTER OR REMOTE COMPRESSOR (WITHOUT AGGREGATE), WITH HEIGHT ADJUSTMENT OF THE DISPLAY BASE AND THE POSSIBILITY OF COMBINING MODULES TO FORM REFRIGERATED LINES.

**L-GT**  
cm - l. 134 / 259 / d. 116,5 / h. 133 / 125

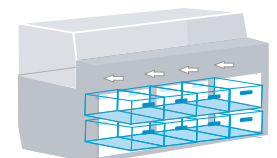
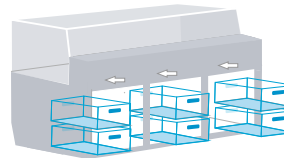
In all counter lines, there is a possibility to choose LED lighting for dairy or meat products.



### SiX Line

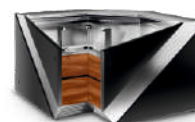
LINE OF OPEN OR CLOSED refrigerated COUNTERS WITH EASILY REPLACEABLE FRONT PANELS IN FURNITURE BOARD OR PAINTED STEEL. AVAILABLE WITH INVERTER COMPRESSOR, WITH THE POSSIBILITY OF COMBINING MODULES TO FORM REFRIGERATING LINES.

The SiX counter storage holds 4 to 8 EURO 2 containers



**L-Xi**  
cm - l. 134,5 / 197 / d. 120 / h. 93

**L-X**  
cm - l. 110 / 134,5 / 197 / d. 120 / h. 121



**L-Si**  
cm - l. 134,5 / 197 / d. 120 / h. 93

**L-S**  
cm - l. 134,5 / 197 / d. 120 / h. 129

**L-X/NW**  
cm - dimensions 150x150 / d. 120 / h. 121

**L-Xi/NW**  
cm - dimensions 150x150 / d. 120 / h. 93

**L-X/NZ**  
cm - dimensions 145x145 / d. 120 / h. 121

### SiX Line - FISH

LINE OF REFRIGERATED COUNTERS WITH TUB CONTAINERS WITH THE POSSIBILITY OF DISPLAYING FISH ON ICE OR WITHOUT ICE, WITH OPEN, UNREFRIGERATED STORAGE SPACE AND WITH THE POSSIBILITY OF COMBINING MODULES.



**L-X FISH**  
cm - l. 134,5 / d. 120 / h. 121

**L-Xi FISH**  
cm - l. 134,5 / d. 120 / h. 93

**L-S FISH**  
cm - l. 134,5 / d. 120 / h. 129

**L-Si FISH**  
cm - l. 134,5 / d. 120 / h. 93

## A Line



### LINE OF REFRIGERATED COUNTERS WITH TEMPERED, STRAIGHT, DIAGONAL GLASS.

L... cm  
**A, A1, A2** l. 122, 137, 152, 179, 201 / d. 82, 90, 107 / h. 122  
**A3** l. 125, 140, 155, 182, 204 / d. 107 / h. 122

It is available in four models (A / A1 / A2 / A3) which differ in equipment, side finish and body colour.



Glass shelf in display area  
 Additional equipment

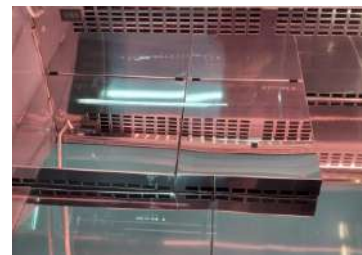
## B Line



### LINE OF REFRIGERATED COUNTERS WITH TEMPERED, CURVED GLASS.

L... cm  
**B, B1, B2** l. 79, 122, 137, 152, 179, 201 / d. 90, 107 / h. 122  
**B3** l. 82, 125, 140, 155, 182, 204 / d. 107 / h. 122

It is available in four models (B / B1 / B2 / B3) which vary in equipment, side finish and housing colour.



Cascade in the display area  
 Additional equipment

## C/D Line



### A LINE OF REFRIGERATED COUNTERS WITH TEMPERED, CURVED GLASS AND LIGHTED BOTTOM PLAFOND.

L... cm  
**C, D** l. 79, 122, 137, 152, 179, 201 / d. 90, 107 / h. 122  
**D3** l. 82, 125, 140, 155, 182, 204 / d. 107 / h. 122

It is available in three models (C / D / D3), varying in equipment, side finish and housing colour.



Glass partition in display area  
 Additional equipment

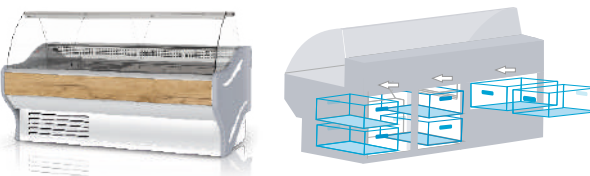
## E Line

### LINE OF REFRIGERATED COUNTERS WITH TEMPERED, CURVED GLASS, STAINLESS STEEL TOP, PAINTED OR FURNITURE BOARD FRONTS AND WITH THE OPTION OF COMBINING MODULES IN LINES.



**L-E1**  
 cm - l. 80, 123, 138, 153, 180, 202 / d. 107 / h. 122

**E1 Max storage holds 6 EURO 2 containers**



**L-E1 Max**  
 cm - l. 202 / d. 107 / h. 12



Granite worktop  
 Additional equipment

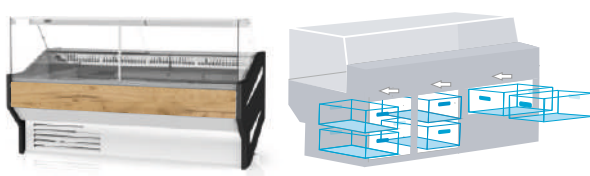
## F line

### LINE OF REFRIGERATED COUNTERS WITH TEMPERED, STRAIGHT VERTICAL GLAZING, STAINLESS STEEL TOP, PAINTED OR FURNITURE BOARD FRONTS AND WITH THE OPTION OF COMBINING MODULES IN LINES.



**L-F**  
 cm - l. 80, 123, 138, 153, 180, 202 / d. 107 / h. 122

**F Max storage holds 6 EURO 2 containers**



**L-F Max**  
 cm - l. 202 / d. 107 / h. 122



Cover for cash registers or scales in steel  
 Additional equipment



**L-F/NW**  
 cm - dimensions 139x139 / d. 107 / h. 122



**L-F/NZ**  
 cm - dimensions 153x153 / d. 107 / h. 122



Railing - Front shelf for customer  
 Additional equipment



Pollen filter (reusable)  
 Additional equipment



MANUFACTURER OF REFRIGERATION EQUIPMENT

## RAPA unrefrigerated furniture - cash counters

Thanks to the many variations in the length and height of our equipment, a standardised colour chart and decors, as well as solutions such as corner counters and neutral cash counters in various shapes and finish options, it is easy to put together a set that fits perfectly into your space. It is worth noting that some of the devices can be combined to form a refrigerated lines, which can be important in terms of saving space.

The checkout area is the best place to display impulse products. Additional items which customers add to their basket while waiting to be served by the cashier increase the final receipt value by up to 40%!



Cash counters



Cash counters  
STRAIGHT



Cash counters  
IMPULS



Cash counters  
INTERNAL CORNER



Cash counters  
EXTERNAL CORNER



Foto: Meat shop Łukasz Gołygowski, Poddębice, Poland

More  
realizations  
on [rapa.pl/en](http://rapa.pl/en)



Configure  
selected  
devices

